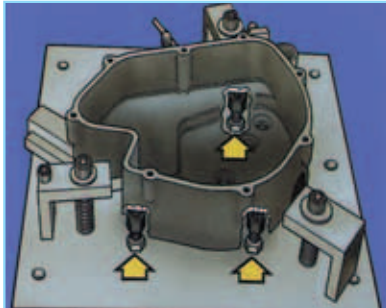


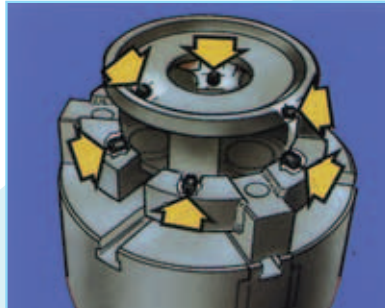
Wixroyd Carbide & Hardened Steel Grippers & Inserts

3530-98

POSITIONING ELEMENTS



Aluminium casting in a machining centre fixture. Three adjustable style grippers are used to balance and hold the workpiece during machining operations.



15kg. casting being turned on a 40hp lathe. Six 3545 grippers inset in three rap jaws, fully encircling workpiece.

Technological improvements in cutting tools, machine speeds and the high cost of many raw materials necessitate the use of fast reliable clamping. Wixroyd grippers and inserts complement the extensive range of Wixroyd self aligning pads (no.s 3400-3416).

In addition the rest pads (no. 3598) are finding an increased use in positioning and part orientating applications – available in carbide, hardened steel, or non-marking white delrin.

MOUNTING OPTIONS

Screw Fixing

Side, rear or front mounting is possible. For full details please refer to installation options, and individual product specification.

Brazing

Through the use of a brass Brazing rod, grippers and inserts can be mounted to your fixture or workpiece. Brazing produces a non-homogenous joint of metals which can be reversed by heating components to the corresponding melting point of Brass, and subsequently properties of the two brazed or joined metals are not compromised.

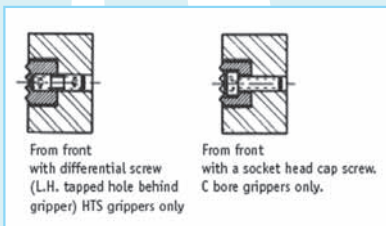
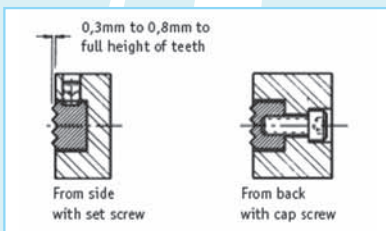


Grippers no. 3551 and 3548 enhance workholding modular fixturing for multiple machining operations.

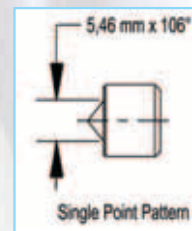
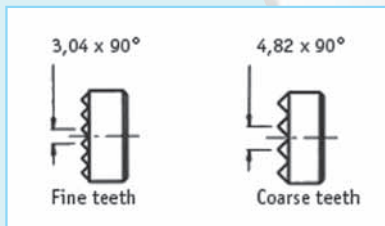
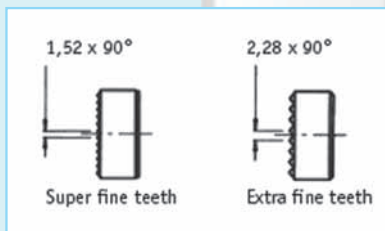


Gripper no. 3546 increases end effector handling capability.

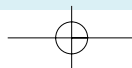
INSTALLATION OPTIONS

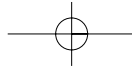


TOOTH PITCHES



TOOTH PATTERNS





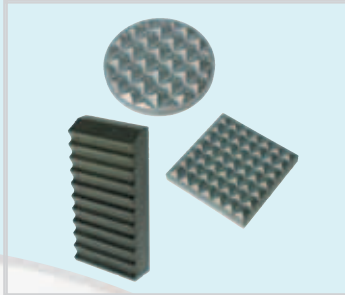
Wixroyd Carbide Hardened Steel Grippers & Inserts

material information



3530-98

SOLID CARBIDE GRIPPER PADS



Material Notes

Manufactured from high impact, high wear C12 Carbide in a solid serrated gripper pad or with a threaded brazed-in steel insert. Mountings are either a blind tapped hole or a flat on the O/D. Hardness value to Rc 92.

Refer to Part Nos.

3530
3531
3532

CARBIDE TIPPED GRIPPERS



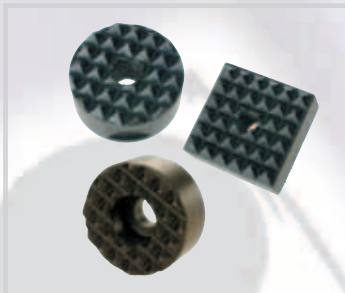
Material Notes

Constructed with a serrated carbide gripper pad brazed to a heat-treated alloy steel body with a tapped hole or a flat on the O/D. for mounting.

Refer to Part Nos.

3533 3540
3534 3541
3535

HARDENED TOOL STEEL GRIPPERS



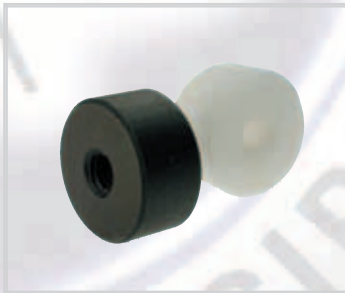
Material Notes

Manufactured from M-2 high speed tool steel, hardened to Rc 60/62 with black oxide finish. With either a tapped hole, C'Bore hole or a flat on O/D. for mounting.

Refer to Part Nos.

3545 3550
3546 3551
3548 3552
3549

REST PADS



Material Notes

Manufactured from 8620 steel, carburised and hardened to Rc 60/62 with black oxide finish. Choice of mountings are C'Bore for front mounting or a blind tapped hole for rear mount.

Manufactured from white delrin. Choice of mountings are C'Bore for front mounting or a blind tapped hole for rear mount.

Refer to Part Nos.

3598



POSITIONING ELEMENTS

