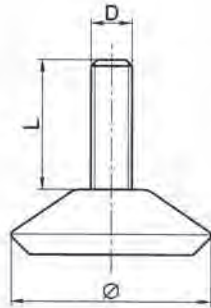


Fixed Feet non-tilt



Order No.	D	Ø	L
3461.W031	M 8	30	22
3461.W032	M 8	30	32
3461.W041	M 8	40	22
3461.W042	M 8	40	32
3461.W045	M10	40	22
3461.W046	M10	40	32
3461.W055	M10	50	22
3461.W056	M10	50	32
3461.W065	M10	60	22
3461.W066	M10	60	32



3461

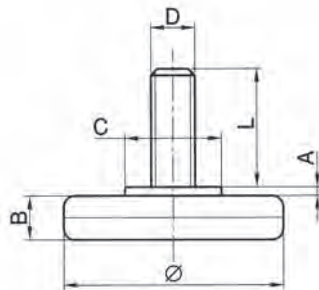


Material
Thread: steel, zinc plated.
Pad: Thermoplastic, black.



POSITIONING ELEMENTS

Fixed Feet non-tilt



Order No.	D	Ø	L	C	B	A
3462.W021	M 8	25	22	18	8	2
3462.W031	M 8	30	22	18	8	2
3462.W041	M 8	40	22	20	9	2
3462.W042	M 8	40	32	20	9	2
3462.W045	M10	40	22	20	9	2
3462.W046	M10	40	32	20	9	2
3462.W055	M10	50	22	22	10	2
3462.W056	M10	50	32	22	10	2
3462.W065	M10	60	22	22	10	2
3462.W066	M10	60	32	22	10	2
3462.W085	M10	80	22	26	10	2
3462.W086	M10	80	32	26	10	2
3642.W022	M 8	25	32	18	8	2



3462



Material
Thread: steel, zinc plated.
Pad: Thermoplastic, black.



Wixroyd

3463

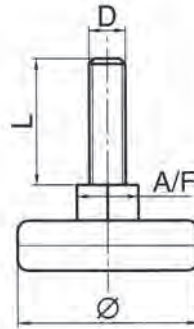


Material
Thread: steel, zinc plated.
Pad: Thermoplastic, black.



POSITIONING ELEMENTS

Fixed Feet
non-tilt



Order No.	D	Ø	L	A/F
3463.W011	M 8	19	22	14
3463.W015	M10	19	22	14
3463.W031	M 8	30	22	17
3463.W041	M 8	40	22	17
3463.W042	M 8	40	32	17
3463.W045	M10	40	22	17
3463.W046	M10	40	32	17
3463.W055	M10	50	22	17
3463.W056	M10	50	32	17
3463.W062	M 8	60	32	17
3463.W063	M 8	60	42	17
3463.W066	M10	60	32	17

Wixroyd

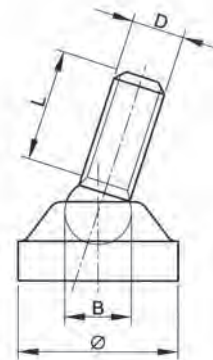
3464



Material
Thread: steel, zinc plated.
Pad: Thermoplastic, black.



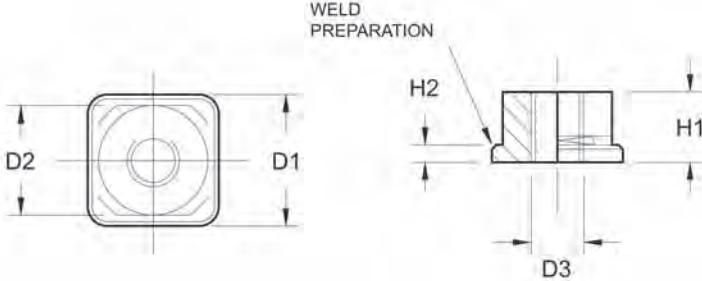
Levelling Feet
plastic



Order No.	D	Ø	L	B
3464.W018	M 8	24	18	10
3464.W050	M 8	24	50	10

Weldable Threaded Insert

stainless steel



Order No.	Section Size	Outer Box D1 (sq)	Inner Box D2	D3	H1	H2	Maz. load capacity for static load max. Kg
3467.W030	30 x 30 x 2,0	30	26	M12	12	4	1500
3467.W031	30 x 30 x 2,0	30	26	M16	16	4	2000
3467.W032	30 x 30 x 3,0	30	24	M12	12	4	1500
3467.W033	30 x 30 x 3,0	30	24	M16	16	4	2000
3467.W040	40 x 40 x 2,0	40	36	M16	16	5	2000
3467.W041	40 x 40 x 2,0	40	36	M20	20	5	3000
3467.W042	40 x 40 x 2,0	40	34	M16	6	5	2000
3467.W043	40 x 40 x 3,0	40	34	M20	20	5	3000
3467.W044	40 x 40 x 3,0	40	34	M24	24	5	4000
3467.W050	50 x 50 x 2,0	50	46	M16	16	6	2000
3467.W051	50 x 50 x 2,0	50	46	M20	20	6	3000
3467.W052	50 x 50 x 2,0	50	46	M24	24	6	4000
3467.W053	50 x 50 x 3,0	50	44	M16	16	6	2000
3467.W054	50 x 50 x 3,0	50	44	M20	20	6	3000
3467.W055	50 x 50 x 3,0	50	44	M24	24	6	4000



3467

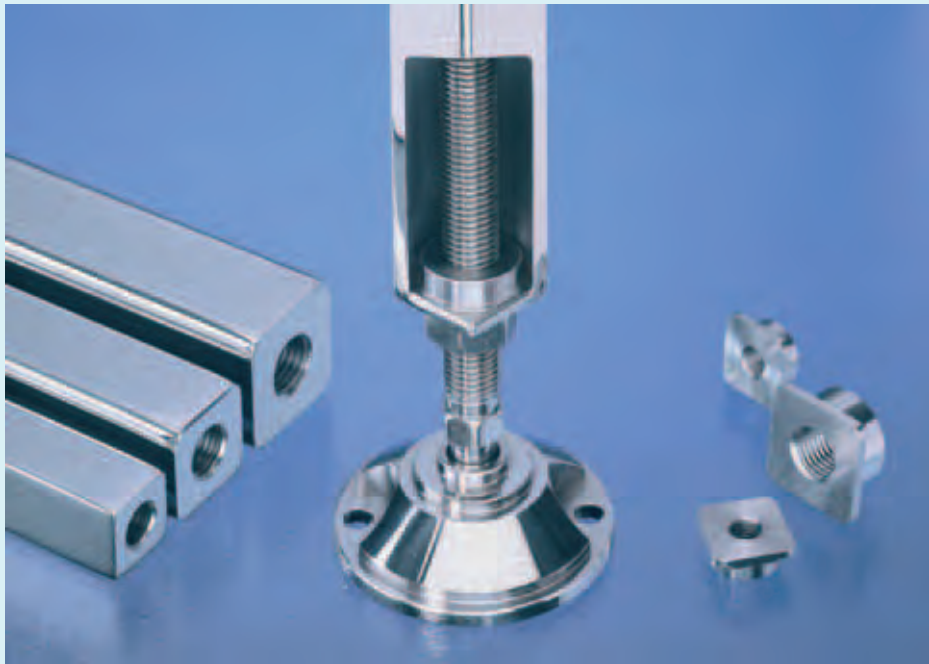


Material
Stainless steel AISI 303.

Technical Notes
Ideal for fixing of levelling feet to boxed section.



POSITIONING ELEMENTS



FREE CAD MODELS:
STAYS
SLIDES
CAM LATCHES
HINGES

VISIT THE WEB
ACCESSCOMPONENTS.CO.UK





3468



Material
Thermoplastic, black. Moulded thread.

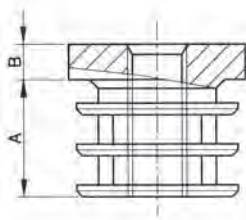
Technical Notes
For use with fixed feet.



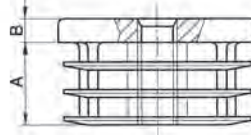
POSITIONING ELEMENTS



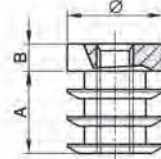
Threaded Plastic Inserts for Hollow Section no bush



Square



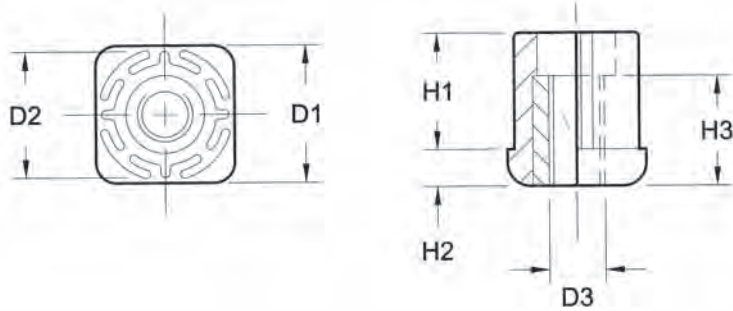
Rectangular



Round

Order No.	Type	Tube Size (mm)	Thread Size	A	B
3468.W015	Square	15 x 15	M 8	18	5
3468.W016	Square	16 x 16	M 8	18	5
3468.W018	Square	18 x 18	M10	18	5
3468.W020	Square	20 x 20	M10	18	5
3468.W022	Square	22 x 22	M10	18	5
3468.W025	Square	25 x 25	M10	19	5
3468.W030	Square	30 x 30	M10	20	6
3468.W035	Square	35 x 35	M10	21	6
3468.W040	Square	40 x 40	M10	22	6
3468.W050	Square	50 x 50	M10	30	6
3468.W130	Rectangular	20 x 30	M10	19	6
3468.W135	Rectangular	20 x 35	M10	19	6
3468.W140	Rectangular	20 x 40	M10	19	6
3468.W150	Rectangular	20 x 50	M10	19	6
3468.W160	Rectangular	20 x 60	M10	19	6
3468.W170	Rectangular	25 x 50	M10	22	6
3468.W218	Round	Ø 18	M10	18	6
3468.W220	Round	Ø 20	M10	18	6
3468.W222	Round	Ø 22	M10	19	6
3468.W225	Round	Ø 25	M10	19	6
3468.W228	Round	Ø 28	M10	19	6
3468.W230	Round	Ø 30	M10	19	6
3468.W232	Round	Ø 32	M10	19	6
3468.W235	Round	Ø 35	M10	20	6
3468.W240	Round	Ø 40	M10	21	6
3468.W250	Round	Ø 50	M10	21	6

Threaded Plastic Inserts for Hollow Section with brass bush



3469



Material
Body: polyamide reinforced Nylon.
Bush: brass, nickel plated.

Technical Notes
For use with levelling feet part.



POSITIONING ELEMENTS

Order No.	Tube size D1	Thread size D3	D2	H1	H2	H3	Max. load capacity for static load max. Kg
3469.W108	30 x 30 x 1,5	M 8	27	35	8	24	500
3469.W110	30 x 30 x 1,5	M10	27	35	8	24	500
3469.W112	30 x 30 x 1,5	M12	27	35	8	24	500
3469.W116	30 x 30 x 1,5	M16	27	35	8	24	500
3469.W208	40 x 40 x 1,5	M 8	37	35	8	24	1000
3469.W210	40 x 40 x 1,5	M10	37	35	8	24	1000
3469.W212	40 x 40 x 1,5	M12	37	35	8	24	1000
3469.W216	40 x 40 x 1,5	M16	37	35	8	24	1000
3469.W220	40 x 40 x 1,5	M20	37	35	8	24	1000
3469.W308	40 x 40 x 2,0	M 8	36	35	8	24	1000
3469.W310	40 x 40 x 2,0	M10	36	35	8	24	1000
3469.W312	40 x 40 x 2,0	M12	36	35	8	24	1000
3469.W316	40 x 40 x 2,0	M16	36	35	8	24	1000
3469.W320	40 x 40 x 2,0	M20	36	35	8	24	1000
3469.W416	50 x 50 x 1,5	M16	47	45	10	24	1200
3469.W420	50 x 50 x 1,5	M20	47	45	10	24	1200
3469.W424	50 x 50 x 1,5	M24	47	45	10	24	1200
3469.W516	50 x 50 x 2,0	M16	46	45	10	24	1200
3469.W520	50 x 50 x 2,0	M20	46	45	10	24	1200
3469.W524	50 x 50 x 2,0	M24	46	45	10	24	1200



Wixroyd

3469



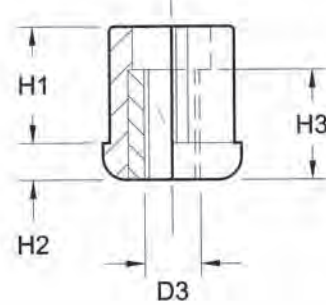
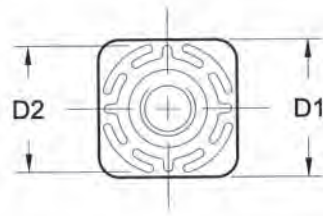
Material
 Bush: Stainless steel, type AISI 303
 Moulding: Polymide Reinforced Nylon



POSITIONING ELEMENTS

Threaded Plastic Insert for Hollow Section

with stainless steel bush



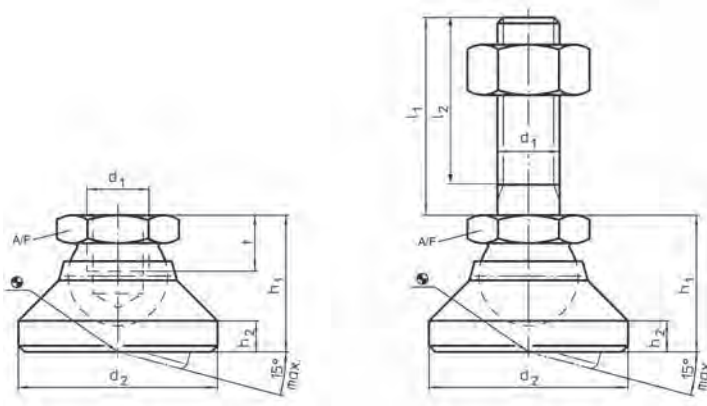
Order No.	Tube size D1	Thread size D3	D2	H1	H2	H3	Max. load capacity for static load max. Kg
3469.W610	30 x 30 x 1,5	M10	27	35	8	24	500
3469.W612	30 x 30 x 1,5	M12	27	35	8	24	500
3469.W616	30 x 30 x 1,5	M16	27	35	8	24	500
3469.W710	40 x 40 x 1,5	M10	37	35	8	24	1000
3469.W712	40 x 40 x 1,5	M12	37	35	8	24	1000
3469.W716	40 x 40 x 1,5	M16	37	35	8	24	1000
3469.W720	40 x 40 x 1,5	M20	37	35	8	24	1000
3469.W810	40 x 40 x 2,0	M10	36	35	8	24	1000
3469.W812	40 x 40 x 2,0	M12	36	35	8	24	1000
3469.W816	40 x 40 x 2,0	M16	36	35	8	24	1000
3469.W820	40 x 40 x 2,0	M20	36	35	8	24	1000
3469.W916	50 x 50 x 1,5	M24	47	45	10	24	1200
3469.W920	50 x 50 x 1,5	M20	47	45	10	24	1200
3469.W924	50 x 50 x 1,5	M24	47	45	10	24	1200
3469.W952	50 x 50 x 2,0	M16	46	45	10	24	1200
3469.W954	50 x 50 x 2,0	M20	46	45	10	24	1200
3469.W956	50 x 50 x 2,0	M24	46	45	10	24	1200

FULL ACCESS TO
 LATEST
 PRODUCTS,
 CAD AND
 SPECIAL OFFERS

WIXROYD.COM



Levelling Feet pad and bolt steel



3470



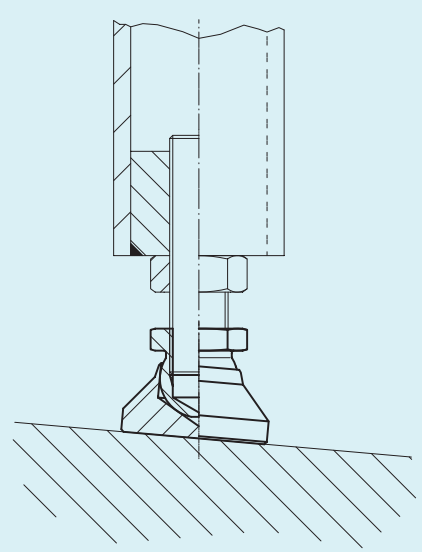
Material
Pad: heat-treated, blackened. Ball: free cutting steel, induction hardened, blackened. Ball with bolt: heat-treated steel, blackened. Lock nut to DIN 934.

Tips
To be used as feet and thrust pads.



POSITIONING ELEMENTS

Order No.	Type	d ₁	l ₁	d ₂	l	h ₁ ≈	h ₂	t	A/F	Max. load capacity for static load kN max.	g
3470.W006	Pad	M 6	-	20	-	14	2,5	5,0	10	10	17,2
3470.W008	Pad	M 8	-	25	-	18	4,0	7,0	13	18	34,0
3470.W010	Pad	M10	-	32	-	22	5,0	9,0	17	20	68,0
3470.W012	Pad	M12	-	40	-	26	6,0	11,0	19	35	114,0
3470.W016	Pad	M16	-	50	-	32	7,0	13,5	24	45	222,0
3470.W020	Pad	M20	-	60	-	42	8,0	17,0	30	55	420,0
3470.W024	Pad	M24	-	60	-	45	9,5	19,0	36	65	460,0
3470.W410	Pad and bolt	M 6	60	20	57,0	14	2,5	-	10	10	32,2
3470.W422	Pad and bolt	M 8	80	25	76,0	18	4,0	-	13	18	64,7
3470.W438	Pad and bolt	M10	100	32	95,5	22	5,0	-	17	20	130,3
3470.W442	Pad and bolt	M10	150	32	145,5	22	5,0	-	17	20	155,3
3470.W452	Pad and bolt	M12	100	40	94,5	26	6,0	-	19	35	210,3
3470.W456	Pad and bolt	M12	150	40	144,5	26	6,0	-	19	35	255,3
3470.W468	Pad and bolt	M16	100	50	94,0	32	7,0	-	24	45	404,2
3470.W472	Pad and bolt	M16	200	50	194,0	32	7,0	-	24	45	539,2
3470.W482	Pad and bolt	M20	100	60	92,5	42	8,0	-	30	55	738,0
3470.W488	Pad and bolt	M20	200	60	192,5	42	8,0	-	30	55	948,0
3470.W495	Pad and bolt	M24	100	60	91,0	45	9,5	-	36	65	845,0
3470.W498	Pad and bolt	M24	200	60	191,0	45	9,5	-	36	65	1145,0



Wixroyd

3470



POSITIONING ELEMENTS

Material

Pad and Bolt: mild steel, Nickel plated.

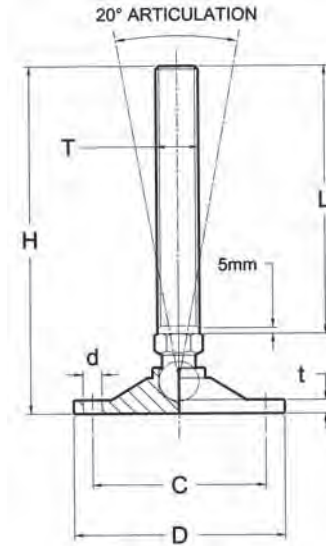
Technical Notes

Bolt has a 20° angle of movement.



Levelling Feet - Bolt Down

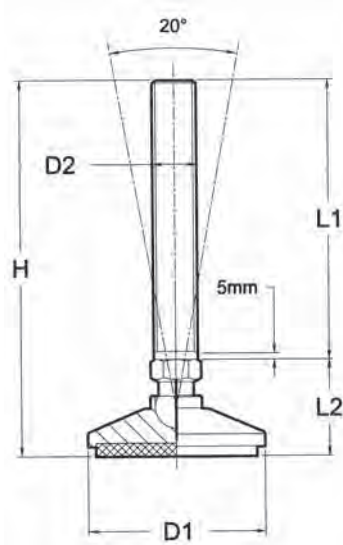
pad and bolt steel



Order No.	Thread size T	L	D	C	H	t	d	Max. load capacity for static load max. Kg
3470.W508	M 8	60	50	40	82	4,0	5,5	300
3470.W600	M10	75	50	40	97	5,0	5,5	500
3470.W620	M12	75	50	40	100	4,0	5,5	750
3470.W621	M12	75	60	50	100	5,0	5,5	1250
3470.W622	M12	125	60	50	150	5,0	5,5	1250
3470.W623	M12	150	60	50	175	5,0	5,5	1250
3470.W660	M16	75	80	68	106	6,0	6,5	1750
3470.W661	M16	125	80	68	156	6,0	6,5	1750
3470.W662	M16	150	80	68	181	6,0	6,5	1750
3470.W700	M20	125	100	82	164	6,5	9,0	2500
3470.W701	M20	150	100	82	181	6,5	9,0	2500
3470.W702	M20	200	100	82	239	6,5	9,0	2500
3470.W741	M24	150	120	100	206	7,5	11,0	3750
3470.W742	M24	200	120	100	256	7,5	11,0	3750



Levelling Feet pad and bolt stainless steel



3471



Material

Pad & Bolt: Stainless steel, type AISI 303. With Nitril rubber pad.

Tips

For use in a wide range of industries including, food processing, pharmaceutical, electronic, medical and machinery shops.

POSITIONING ELEMENTS

Order No.	Thread size D ₂	L ₁	l ₂	D ₁	H	Max. load capacity for static load max. Kg
3471.W120	M12	75	27	55	102	750
3471.W121	M12	125	27	55	152	750
3471.W122	M12	150	27	55	177	750
3471.W160	M16	75	33	65	108	1250
3471.W161	M16	125	33	65	158	1250
3471.W162	M16	150	33	65	183	1250
3471.W200	M20	125	41	75	166	1750
3471.W201	M20	150	41	75	191	1750
3471.W202	M20	200	41	75	241	1750
3471.W240	M24	125	52	100	177	2500
3471.W241	M24	150	52	100	202	2500
3471.W242	M24	200	52	100	252	2500



Wixroyd

3471



Material

Pad and Bolt: stainless steel, AISI 303.

Technical Notes

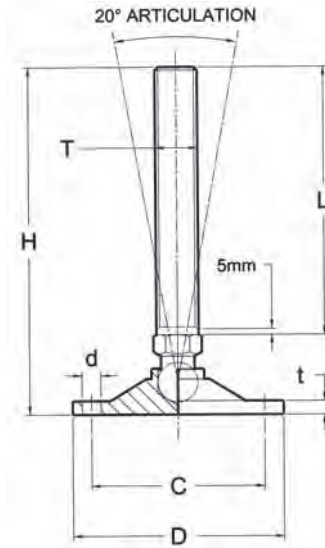
Bolt has a 20° angle of movement.



POSITIONING ELEMENTS

Levelling Feet - Bolt Down, Medium Duty

pad and bolt **stainless steel**



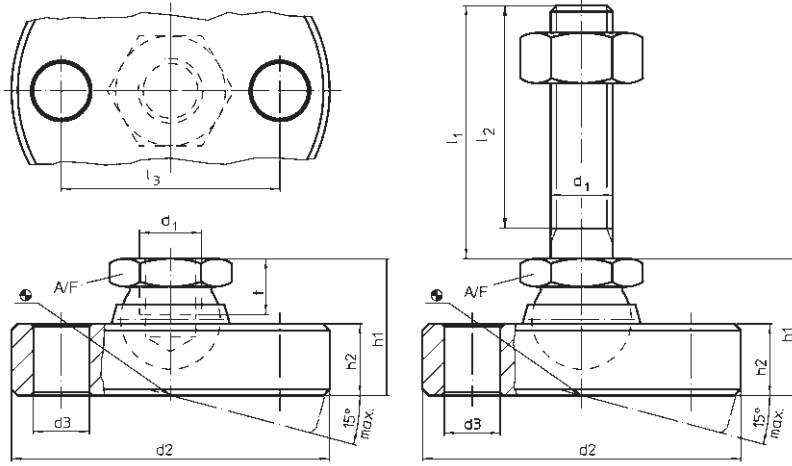
Order No.	Thread size T	L	D	C	H	t	d	Max. load capacity for static load max. Kg
3471.W508	M 8	60	50	40	82	4,0	5,5	300
3471.W600	M10	75	50	40	97	5,0	5,5	500
3471.W620	M12	75	50	40	100	4,0	5,5	750
3471.W621	M12	75	60	50	100	5,0	5,5	1250
3471.W622	M12	125	60	50	150	5,0	5,5	1250
3471.W623	M12	150	60	50	175	5,0	5,5	1250
3471.W660	M16	75	80	68	106	6,0	6,5	1750
3471.W661	M16	125	80	68	156	6,0	6,5	1750
3471.W662	M16	150	80	68	181	6,0	6,5	1750
3471.W700	M20	125	100	82	164	6,5	9,0	2500
3471.W701	M20	150	100	82	181	6,5	9,0	2500
3471.W702	M20	200	100	82	239	6,5	9,0	2500
3471.W703	M24	150	120	100	206	7,5	11,0	3750
3471.W704	M24	200	120	100	256	7,5	11,0	3750



Wixroyd
engineering ingenuity

Levelling Feet - Bolt Down, Heavy Duty

pad and bolt **stainless steel**



3471



Material

Pad & Bolt: Stainless steel 1.4305, AISI 303.

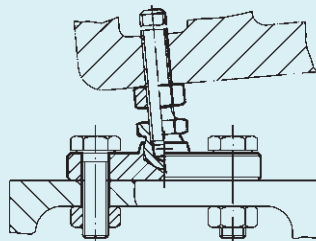
Technical Notes

To be used as foot and thrust pad.
Including two mounting holes in pad.



POSITIONING ELEMENTS

Order No.	Finish	d ₁	l ₁	d ₂ -0,5	d ₃	l ₂	l ₃	h ₁ ≈	h ₂	t	A/F	Max. load capacity for static load max kN	Δg
3471.W706	Pad	M 6	-	45	6,6	-	32	14	6,5	5,0	10	8	80
3471.W708	Pad	M 8	-	50	6,6	-	38	18	8,5	7,0	13	14	130
3471.W710	Pad	M10	-	60	9,0	-	44	22	11,5	9,0	17	16	248
3471.W712	Pad	M12	-	65	9,0	-	48	26	12,5	11,0	19	28	323
3471.W716	Pad	M16	-	70	9,0	-	54	32	13,5	13,5	24	36	427
3471.W720	Pad	M20	-	80	9,0	-	64	42	16,5	17,0	30	44	724
3471.W724	Pad	M24	-	100	11,0	-	78	45	20,5	19,0	36	52	1325
3471.W810	Pad and bolt	M 6	60	45	6,6	57,0	32	14	6,5	-	10	8	93
3471.W822	Pad and bolt	M 8	80	50	6,6	76,0	38	18	8,5	-	13	14	164
3471.W838	Pad and bolt	M10	100	60	9,0	95,5	44	22	11,5	-	17	16	316
3471.W842	Pad and bolt	M10	150	60	9,0	145,5	44	22	11,5	-	17	16	340
3471.W852	Pad and bolt	M12	100	65	9,0	94,5	48	26	12,5	-	19	28	420
3471.W856	Pad and bolt	M12	150	65	9,0	144,5	48	26	12,5	-	19	28	456
3471.W868	Pad and bolt	M16	100	70	9,0	94,0	54	32	13,5	-	24	36	616
3471.W872	Pad and bolt	M16	200	70	9,0	194,0	54	32	13,5	-	24	36	747
3471.W882	Pad and bolt	M20	100	80	9,0	92,5	64	42	16,5	-	30	44	1025
3471.W888	Pad and bolt	M20	200	80	9,0	192,5	64	42	16,5	-	30	44	1230
3471.W895	Pad and bolt	M24	100	100	11,0	91,0	78	45	20,5	-	36	52	1787
3471.W898	Pad and bolt	M24	200	100	11,0	191,0	78	45	20,5	-	36	52	2081



Wixroyd

3472



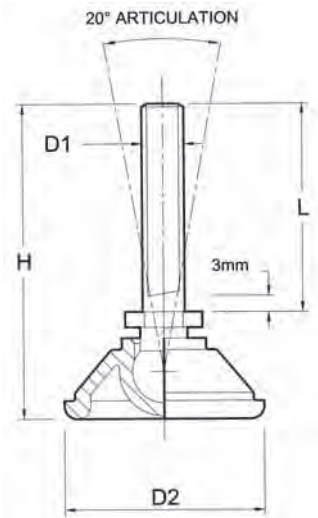
POSITIONING ELEMENTS

Material

Pad: polyamide reinforced nylon.
Bolt: mild steel, plated.



Levelling Feet
pad plastic, bolt steel

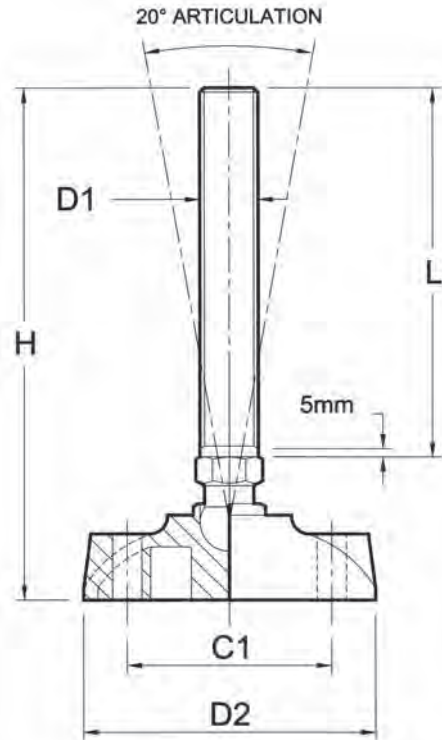


Order No.	Thread size D1	L	D2	H	Max. load capacity for static load max. Kg
3472.W060	M 6	20	40	41	300
3472.W061	M 6	20	50	43	300
3472.W062	M 6	40	40	61	300
3472.W063	M 6	40	50	63	300
3472.W080	M 8	25	40	46	450
3472.W081	M 8	25	50	48	450
3472.W082	M 8	40	40	61	450
3472.W083	M 8	40	50	63	450
3472.W084	M 8	60	40	81	450
3472.W085	M 8	60	50	83	450
3472.W100	M10	38	40	59	500
3472.W101	M10	38	50	61	500
3472.W102	M10	60	40	81	500
3472.W103	M10	60	50	83	500
3472.W104	M10	75	40	96	500
3472.W105	M10	75	50	98	500
3472.W120	M12	50	40	76	600
3472.W121	M12	50	50	75	600
3472.W122	M12	75	40	98	600
3472.W123	M12	75	50	100	600
3472.W124	M12	100	40	123	600
3472.W125	M12	100	50	125	600
3472.W126	M12	125	40	148	600
3472.W127	M12	125	50	150	600



Levelling Feet - Bolt Down

pad plastic, bolt steel



3472



POSITIONING ELEMENTS

Material

Pad: polyamide reinforced nylon.
Bolt: mild steel, electrolyses nickel plated.

Technical Notes

Supplied with plastic mounting hole plugs, these prevent material and waste entering the mounting holes, thus simplifying cleaning and maintenance. Size of mounting holes Ø10,5 mm.



Order	Thread size D1	L	D2	C1	H	Max. load capacity for static load max. Kg
3472.W620	M12	75	100	82	117	1000
3472.W621	M12	125	100	82	167	1000
3472.W622	M12	150	100	82	192	1000
3472.W660	M16	75	100	82	120	2000
3472.W661	M16	125	100	82	170	2000
3472.W662	M16	150	100	82	195	2000
3472.W663	M16	200	100	82	245	2000
3472.W700	M20	125	100	82	174	2000
3472.W701	M20	150	100	82	199	2000
3472.W702	M20	200	100	82	249	2000
3472.W720	M24	125	100	82	178	2000
3472.W721	M24	150	100	82	203	2000
3472.W722	M24	200	100	82	253	2000
3472.W723	M24	250	100	82	303	2000



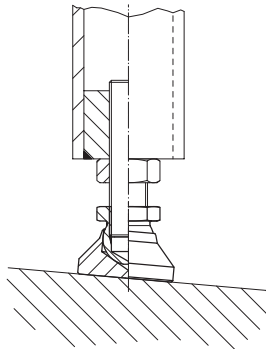
Wixroyd

3474



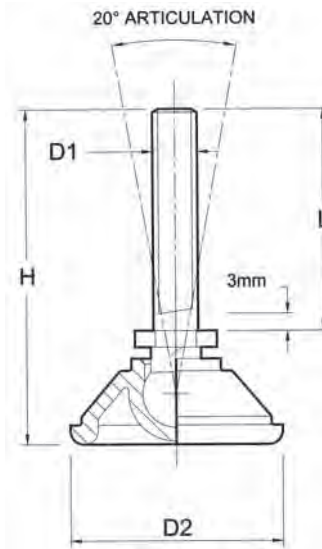
POSITIONING ELEMENTS

Material
 Pad: polyamide reinforced nylon.
 Bolt: Stainless steel, AISI 303.



Levelling Feet

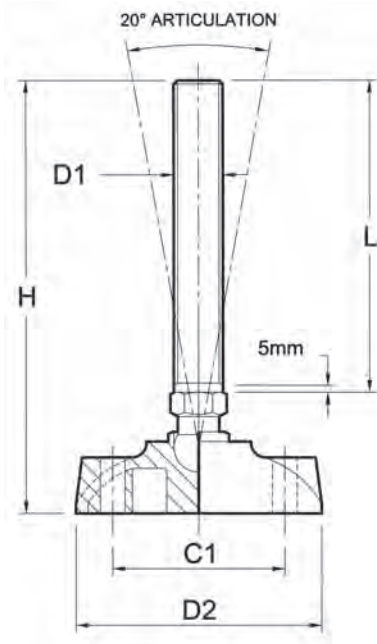
pad plastic, bolt **stainless steel**



Order No.	Thread size D1	L	D2	H	Max. load capacity for static load max. Kg
3474.W060	M 6	20	40	41	300
3474.W061	M 6	20	50	43	300
3474.W062	M 6	40	40	61	300
3474.W063	M 6	40	50	63	300
3474.W080	M 8	25	40	46	450
3474.W081	M 8	25	50	48	450
3474.W082	M 8	40	40	61	450
3474.W083	M 8	40	50	63	450
3474.W084	M 8	60	40	81	450
3474.W085	M 8	60	50	83	450
3474.W100	M10	38	40	59	500
3474.W101	M10	38	50	61	500
3474.W102	M10	60	40	81	500
3474.W103	M10	60	50	83	500
3474.W104	M10	75	40	96	500
3474.W105	M10	75	50	98	500
3474.W120	M12	50	40	76	600
3474.W121	M12	50	50	75	600
3474.W122	M12	75	40	98	600
3474.W123	M12	75	50	100	600
3474.W124	M12	100	40	123	600
3474.W125	M12	100	50	125	600
3474.W126	M12	125	40	148	600
3474.W127	M12	125	50	150	600

Levelling Feet - Bolt Down

pad plastic, bolt **stainless steel**



3474



Material

Pad: polyamide reinforced Nylon.
Bolt: Stainless steel AISI 303.

Technical Notes

Supplied with plastic mounting hole plugs, these prevent material and waste entering the mounting holes, thus simplifying cleaning and maintenance. Size of mounting holes $\varnothing 10,5$ mm.

POSITIONING ELEMENTS

Order No.	Thread size D1	L	D2	C1	H	Max. load capacity for static load max. Kg
3474.W620	M12	75	100	82	117	1000
3474.W621	M12	125	100	82	167	1000
3474.W622	M12	150	100	82	192	1000
3474.W660	M16	75	100	82	120	2000
3474.W661	M16	125	100	82	170	2000
3474.W662	M16	150	100	82	195	2000
3474.W663	M16	200	100	82	245	2000
3474.W700	M20	125	100	82	174	2000
3474.W701	M20	150	100	82	199	2000
3474.W702	M20	200	100	82	249	2000
3474.W720	M24	125	100	82	178	2000
3474.W721	M24	150	100	82	203	2000
3474.W722	M24	200	100	82	253	2000
3474.W723	M24	250	100	82	303	2000



NEED SOMETHING SPECIAL?



Contact us for quick quotes for special items





3475



POSITIONING ELEMENTS

Material

Pad: pressed Stainless steel AISI 303.
Bolt: Stainless steel AISI 303.
Pad Insert: Nitril rubber.

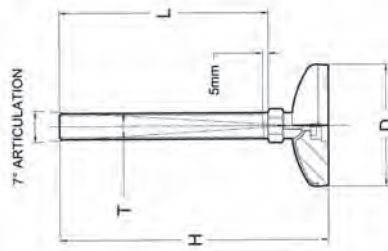
Tips

For use in wide range of industries including food processing, medical equipment, electronics and machinery workshops.

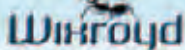


Machine Mount - Vibration Dampening

pad and bolt **stainless steel**



Order No.	Thread size T	D	L	H	Max. load capacity for static load max. Kg
3475.W100	M10	50	50	75	350
3475.W101	M10	50	100	125	350
3475.W120	M12	50	100	125	350
3475.W121	M12	50	150	175	350
3475.W160	M16	50	100	128	350
3475.W161	M16	50	150	178	350
3475.W162	M16	75	100	133	750
3475.W163	M16	75	150	183	750
3475.W164	M16	75	233	233	750
3475.W165	M16	100	100	138	1000
3475.W166	M16	100	150	188	1000
3475.W167	M16	100	200	238	1000
3475.W200	M20	75	150	185	750
3475.W201	M20	75	200	235	750
3475.W202	M20	100	150	191	1000
3475.W203	M20	100	200	241	1000
3475.W240	M24	100	150	193	1000
3475.W241	M24	100	250	293	1000



3475



Material

Pad: pressed Stainless steel AISI 303.
Bolt: Stainless steel AISI 303.
Pad Insert: Nitril rubber.

Technical Notes

Use of the bolt down tag allows the machine mount to be fixed in place.

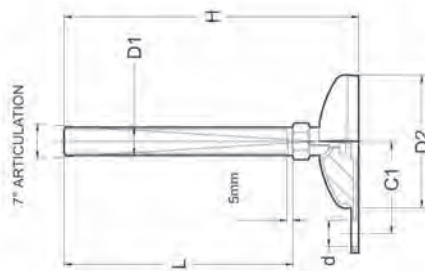
Tips

For use in wide range of industries including food processing, medical equipment, electronics and machinery workshops.



Machine Mount - Bolt Down

pad and bolt **stainless steel**



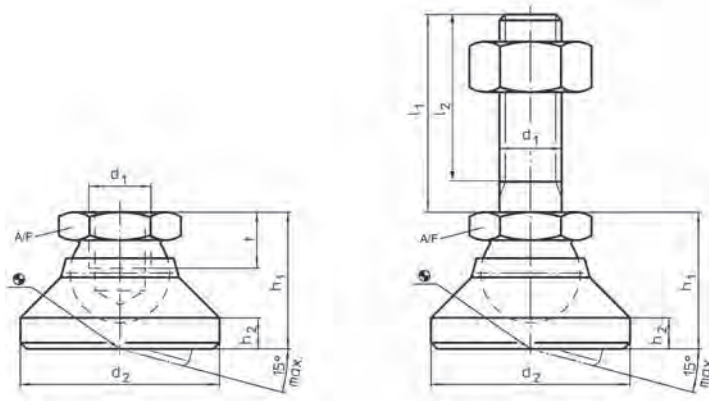
Order No.	D1	L	H	D2	C1	d	Max. load capacity for static load max. Kg
3475.W662	M16	100	133	75	52	13	750
3475.W663	M16	150	183	75	52	13	750
3475.W664	M16	200	233	75	52	13	750
3475.W700	M20	150	183	75	52	13	750
3475.W701	M20	200	233	75	52	13	750
3475.W665	M16	100	138	100	67	13	1000
3475.W666	M16	150	188	100	67	13	1000
3475.W667	M16	200	238	100	67	13	1000
3475.W702	M20	150	191	100	67	13	1000
3475.W703	M20	200	241	100	67	13	1000
3475.W740	M24	150	193	100	67	13	1000
3475.W741	M24	200	293	100	67	13	1000

Levelling Feet

pad Delrin, bolt stainless steel



3476



Material

Pad: white Delrin (POM).
 Bolt: stainless steel 1.4305/AISI 303.
 Lock nut to DIN 934, stainless steel.

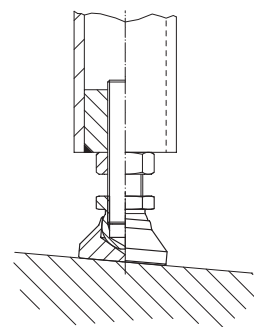
Technical Notes

For use as feet and thrust pads.

POSITIONING ELEMENTS

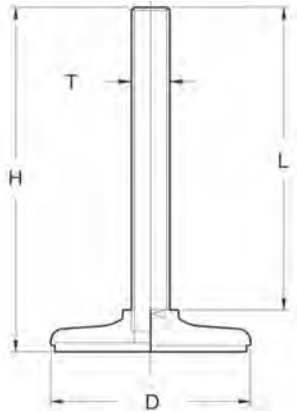


Order No.	Type	d ₁	l ₁	d ₂	l ₂	h ₁ ≈	h ₂	t	A/F	Max. load capacity for static load kN max.	g
3476.W106	Pad	M 6	-	20	-	14	2,5	5,0	10	4	8,2
3476.W108	Pad	M 8	-	25	-	18	4,0	7,0	13	7	17,2
3476.W110	Pad	M10	-	32	-	22	5,0	9,0	17	10	35,8
3476.W112	Pad	M12	-	40	-	26	6,0	11,0	19	18	54,3
3476.W116	Pad	M16	-	50	-	32	7,0	13,5	24	20	103,2
3476.W120	Pad	M20	-	60	-	42	8,0	17,0	30	22	205,0
3476.W124	Pad	M24	-	60	-	45	9,5	19,0	36	25	285,0
3476.W510	Pad and bolt	M 6	60	20	57,0	14	2,5	-	10	4	20,2
3476.W522	Pad and bolt	M 8	80	25	76,0	18	4,0	-	13	7	44,7
3476.W538	Pad and bolt	M10	100	32	95,5	22	5,0	-	17	10	90,3
3476.W542	Pad and bolt	M10	150	32	145,5	22	5,0	-	17	10	120,3
3476.W552	Pad and bolt	M12	100	40	94,5	26	6,0	-	19	18	136,3
3476.W556	Pad and bolt	M12	150	40	144,5	26	6,0	-	19	18	175,3
3476.W568	Pad and bolt	M16	100	50	94,0	32	7,0	-	24	20	253,2
3476.W572	Pad and bolt	M16	200	50	194,0	32	7,0	-	24	20	389,2
3476.W582	Pad and bolt	M20	100	60	92,5	42	8,0	-	30	22	468,0
3476.W588	Pad and bolt	M20	200	60	192,5	42	8,0	-	30	22	678,0
3476.W595	Pad and bolt	M24	100	60	91,0	45	9,5	-	36	25	655,0
3476.W598	Pad and bolt	M24	200	60	191,0	45	9,5	-	36	25	945,0



Machine Feet - Low Profile

pad and bolt **stainless steel**



Order No.	Thread Size T	L	D	H	Pad Thickness	Max. load capacity for static load Kg.
3478.W082	M 8	40	40	52	3	450
3478.W084	M 8	60	40	72	3	450
3478.W100	M10	40	40	52	3	600
3478.W102	M10	60	40	72	3	600
3478.W104	M10	80	40	92	3	600
3478.W086	M 8	40	50	54	3	450
3478.W088	M 8	60	50	74	3	450
3478.W106	M10	40	50	54	3	600
3478.W108	M10	60	50	74	3	600
3478.W110	M10	80	50	94	3	600
3478.W120	M12	50	50	65	3	750
3478.W121	M12	75	50	90	3	750
3478.W123	M12	100	50	115	3	750
3478.W125	M12	75	60	90	3	1250
3478.W126	M12	125	60	140	3	1250
3478.W127	M12	150	60	165	3	1250
3478.W128	M12	150	80	171	3	1500
3478.W161	M16	150	80	171	3	2000
3478.W162	M16	150	120	174	3	2000
3478.W201	M20	200	120	224	3	3000
3478.W202	M20	200	150	226	3	3000
3478.W241	M24	200	150	226	3	4000

Wixroyd

3478



Material

Pad & Bolt: AISI 304 stainless steel.
Inset nitrile rubber pad.

Technical Notes

Suitable for use in food & drink,
pharmaceutical and clean room
environments.



POSITIONING ELEMENTS

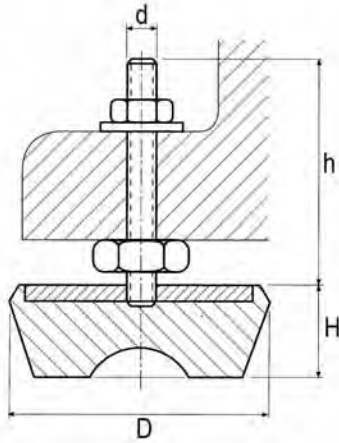
CAD MODELS
available
in wide
range of
formats

Request
Your Copy

Wixroyd
engineering ingenuity

Machine Mounts - Standard Profile

anti-vibration



3490



Material

Cast iron body with zinc plated thread. Synthetic rubber base 65-70 shore with anti-slide cavity.

Technical Notes

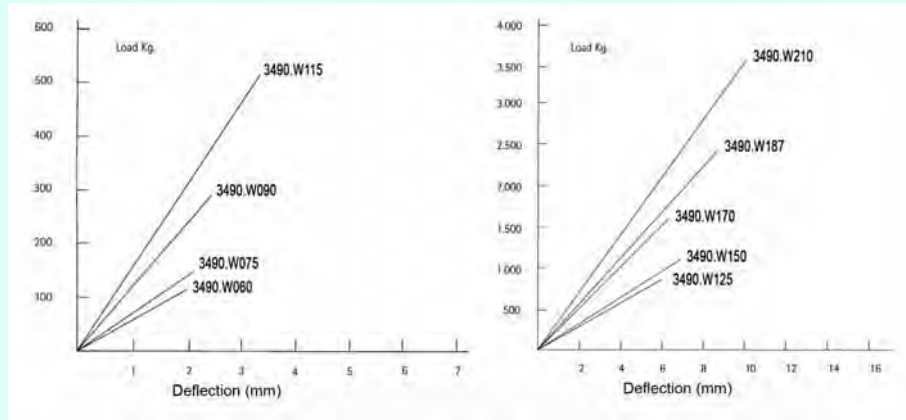
Suitable for machinery with low frequency vibrations and for irregular floors.

Tips

Select size according to load to be carried per mount.

POSITIONING ELEMENTS

Order No.	Optimal load range (Kg.)	D	H	d	h	g
3490.W048	0-80	48	23	M8	40	100
3490.W060	50-120	62	25	M10	83	250
3490.W075	80-150	75	30	M12	90	420
3490.W090	120-300	90	33	M12	90	620
3490.W115	250-500	115	39	M16	110	990
3490.W125	400-800	125	45	M16	110	1400
3490.W150	600-1,100	150	55	M16	110	2170
3490.W170	1,000-1,600	170	57	M16	110	2910
3490.W187	1,400-2,400	187	70	M20	118	4490
3490.W210	2,000-3,500	210	75	M20	118	5940





3491



POSITIONING ELEMENTS

Material
Cast iron body with zinc plated thread.
Synthetic rubber base 65-70 shore with anti-slide cavity.

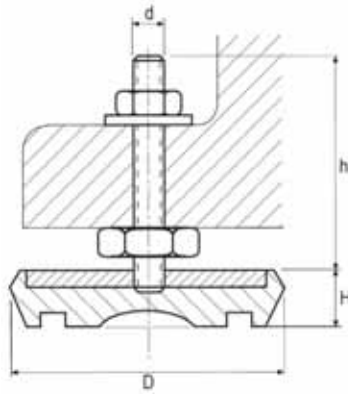
Technical Notes
Suitable for medium and high frequency vibrations and with smooth floors.

Tips
For inclined floors use the swivel base version (M12 and M16)

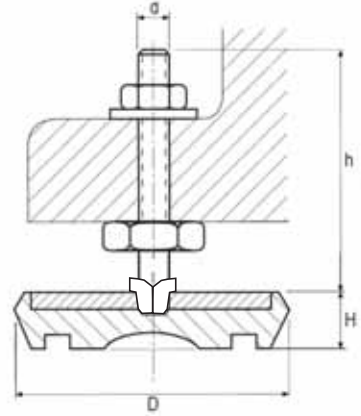
Machine Mounts - low profile anti-vibration



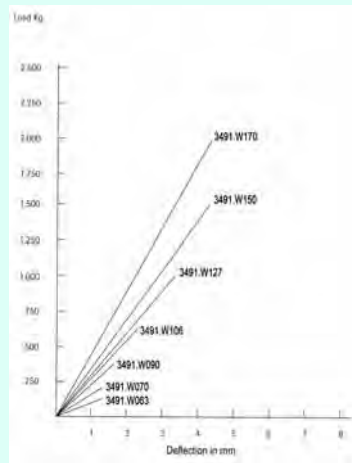
Fixed



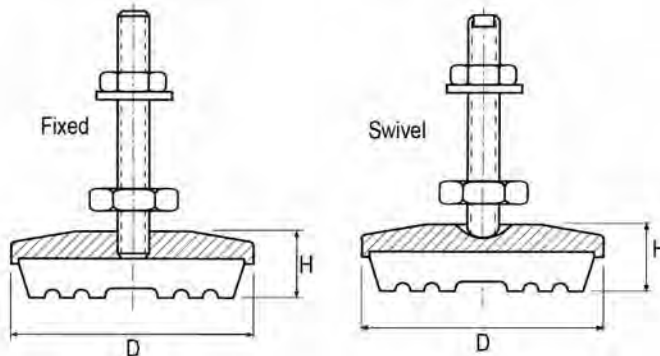
Swivel



Order No.	Style	Optimal Load range (Kg)	D	H	d	h	g
3491.W040	Fixed	0-60	42	15	M8	37	70
3491.W063	Fixed	30-100	63	18	M10	83	225
3491.W070	Fixed	80-150	70	22	M12	90	365
3491.W090	Fixed	100-350	90	26	M12	90	600
3491.W106	Fixed	300-600	108	30	M16	110	945
3491.W127	Fixed	500-900	127	34	M16	110	1310
3491.W150	Fixed	800-1,500	150	38	M16	110	2015
3491.W170	Fixed	1,300-2,000	170	42	M16	110	2560
3491.W370	Swivel	80-150	70	22	M12	90	365
3491.W390	Swivel	100-350	90	26	M12	90	600
3491.W406	Swivel	300-600	108	30	M16	110	945
3491.W427	Swivel	500-900	127	34	M16	110	1310
3491.W450	Swivel	800-1,500	150	38	M16	110	2015
3491.W470	Swivel	1,300-2,000	170	42	M16	110	2560



Machine Mounts - Polyurethane



Order No.	Version	Optimal Load Range (Kg)	D	H	g
3493.W065	Fixed, Polyur	200-800	65	27	380
3493.W100	Fixed, Polyur	800-2,000	100	30	830
3493.W120	Fixed, Polyur	2,000-4,000	123	33	1410
3493.W180	Fixed, Polyur	4,000-6,000	173	40	2750
3493.W217	Fixed, Polyur	5,000-10,000	217	48	5470
3493.W400	Swivel, Polyur	500-2000	100	30	600
3493.W401	Swivel, Rubber	80-300	100	30	850
3493.W420	Swivel, Polyur	2,000-4,000	123	31	280
3493.W421	Swivel, Rubber	500-2,000	123	33	1430
3493.W480	Swivel, Polyur	4,000-6,000	173	40	2770
3493.W617	Swivel, Polyur	5,000-10,000	217	48	5450



3493



Material

Cast steel (GGG-40) coated body with zinc plated thread.
Base polyurethane 80-85 shore.

Technical Notes

High resistance machine mounts, little deflection and maximum adherence due to shape of base.
Resistant to water, oil, high and low temperatures, abrasions and shocks.

Tips

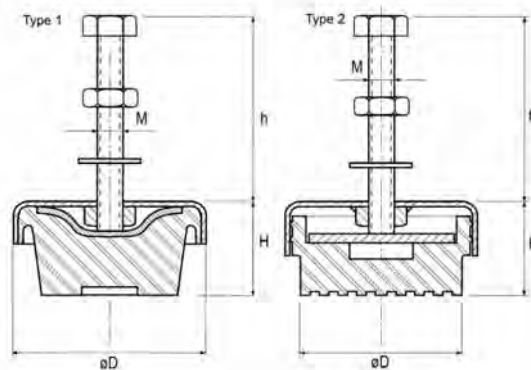
Suitable for heavy machining and conditions where there is high risk of deterioration due to oil and other substances.

Important Notes

Also available in stainless steel - see product number 3498.

POSITIONING ELEMENTS

Machine mounts - Heavy Duty anti-vibration



Order No.	Type	Optimal range (kg)	D (mm)	H	Thread	h
3494.W050	type 1	0-100	50	24	M8x50	40
3494.W075	type 1	100-350	76	35	M10x75	65
3494.W085	type 2	350-600	90	40	M12x90	80
3494.W090	type 2	600-900	90	49	M16x100	90
3494.W125	type 2	1,000-2,500	125	52	M16x100	90
3494.W170	type 2	2,500-4,000	170	57	M20x130	120



3494



Material

Coated steel body with special bowl shape to protect against corrosion.
Synthetic rubber base, 75 shore.

Technical Notes

Provides long life and outstanding stability. Great adherence to the floor, due to excellent grip property. Quick and easy to install - for machine levelling.

Tips

Suitable for heavy machinery with strong vibration/impact such as plastic injection, moulding machines, presses, guillotines etc.

Wixroyd

3496



Material
Cast body, coated. With rubber (shore 65) or harder polyurethane base (shore 90).

Technical Notes
For levelling and vibration dampening of heavy loads. Adjustment by means of screw on side.
Adjustment is +/- 5mm or +/- 10mm depending on version selected - see table.

Tips
The rubber base versions are lower load carrying capacity but are less expensive than the polyurethane versions.

POSITIONING ELEMENTS

Wedge Mount
anti-vibration



Order No.	Load range (Kg)	Base material	H	a x b
3496.W150	500-1,000	Rubber	60±5	150x75
3496.W150	700-2,500	Polyur.	60±5	150x75
3496.W220	1,500-3,000	Rubber	90±10	220x110
3496.W220	3,000-6,000	Polyur.	90±10	220x110

Wixroyd

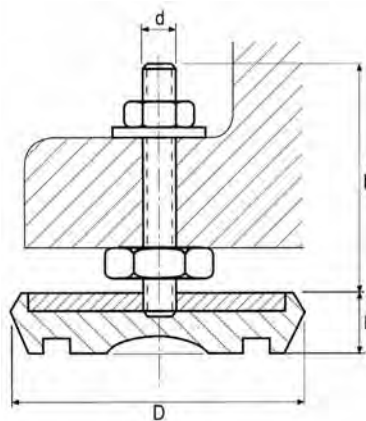
3498



Material
Stainless Steel (AISI304) body and thread. Synthetic rubber base, 65 shore.

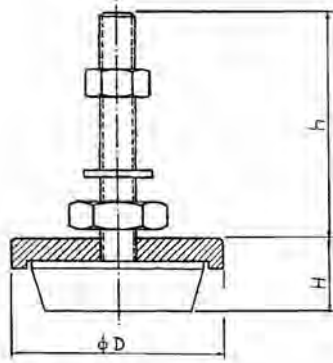


Machine Mounts - stainless steel
rubber base



Order No.	Optimal Load range (Kg)	D	H	Thread	h
3498.W040	0-60	40	15	M8	40
3498.W063	30-100	63	18	M10	83
3498.W070	80-150	70	22	M12	90
3498.W090	100-350	90	25	M12	90
3498.W106	300-600	106	29	M16	110
3498.W127	500-900	127	33	M16	110
3498.W150	800-1,500	150	39	M16	110
3498.W170	1,300-2,000	170	42	M16	110

Machine Mounts - **Stainless Steel** polyurethane base



Order No.	Optimal Load range (Kg)	D	H	Thread	h
3499.W065	200-800	65	22	M12	90
3499.W100	500-2,000	100	30	M16	110
3499.W120	2,000-4,000	120	33	M16	120
3499.W180	4,000-6,000	180	40	M16	115



3499



Material
Stainless steel body and thread (A2, AISI304) base with hard polyurethane base (shore 80).

Technical Notes
Ideally suited for food and pharmaceutical applications. The hard polyurethane base is resistant to aggressive oils and chemicals.

Tips
The polyurethane base (shore 80) also ensures very heavy load carrying capacity.



POSITIONING ELEMENTS

