

Wixroyd

3702



Material

Steel, quality 5.8, blackened. Turned, visible face, good finish.

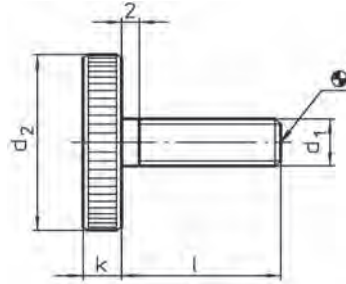
Technical Notes

All knurled screws are one-piece manufactured with thread up to the head (DIN-designation 'A').



POSITIONING ELEMENTS

Flat Knurled Thumb Screws

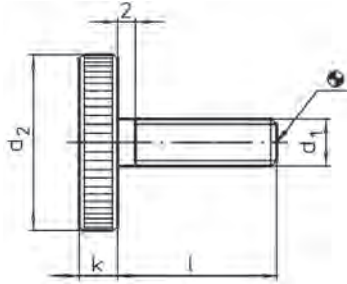
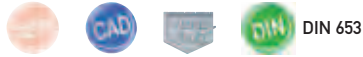


Order No.	d ₁	l	d ₂	k	g
3702.W072	M 3	6	12	2,5	2,4
3702.W073	M 3	8	12	2,5	2,5
3702.W074	M 3	10	12	2,5	2,6
3702.W077	M 3	16	12	2,5	2,9
3702.W092	M 4	8	16	3,5	6,1
3702.W093	M 4	10	16	3,5	6,2
3702.W094	M 4	12	16	3,5	6,4
3702.W096	M 4	16	16	3,5	6,7
3702.W098	M 4	20	16	3,5	7,0
3702.W100	M 4	25	16	3,5	7,4
3702.W112	M 5	10	20	4,0	11,0
3702.W113	M 5	12	20	4,0	11,3
3702.W115	M 5	16	20	4,0	11,7
3702.W117	M 5	20	20	4,0	12,0
3702.W119	M 5	25	20	4,0	12,6
3702.W121	M 5	30	20	4,0	13,0
3702.W132	M 6	12	24	5,0	20,0
3702.W134	M 6	16	24	5,0	20,4
3702.W136	M 6	20	24	5,0	21,0
3702.W138	M 6	25	24	5,0	22,0
3702.W140	M 6	30	24	5,0	22,6
3702.W154	M 8	20	30	6,0	40,0
3702.W156	M 8	25	30	6,0	42,0
3702.W158	M 8	30	30	6,0	43,0
3702.W160	M 8	35	30	6,0	45,0
3702.W161	M 8	40	30	6,0	47,0
3702.W172	M10	20	36	8,0	73,0
3702.W174	M10	25	36	8,0	76,0
3702.W176	M10	30	36	8,0	78,0
3702.W180	M10	40	36	8,0	83,0



Flat Knurled Thumb Screws

stainless steel



3704



Order No.	d ₁	l	d ₂	k	g
3704.W092	M 4	8	16	3,5	6,1
3704.W093	M 4	10	16	3,5	6,2
3704.W094	M 4	12	16	3,5	6,4
3704.W096	M 4	16	16	3,5	6,7
3704.W112	M 5	10	20	4,0	11,0
3704.W113	M 5	12	20	4,0	11,3
3704.W115	M 5	16	20	4,0	11,7
3704.W117	M 5	20	20	4,0	12,0
3704.W132	M 6	12	24	5,0	20,0
3704.W134	M 6	16	24	5,0	20,4
3704.W136	M 6	20	24	5,0	21,0
3704.W138	M 6	25	24	5,0	22,0
3704.W154	M 8	20	30	6,0	40,0
3704.W156	M 8	25	30	6,0	42,0
3704.W158	M 8	30	30	6,0	43,0
3704.W172	M10	20	36	8,0	73,0
3704.W174	M10	25	36	8,0	76,0
3704.W176	M10	30	36	8,0	78,0
3704.W180	M10	40	36	8,0	83,0

Material

Stainless steel 1.4305 (AISI 303).

Technical Notes

All knurled screws are one-piece manufactured with thread upto the head (DIN-designation 'A').



POSITIONING ELEMENTS





37100



Material

Steel, quality 5.8, blackened. Turned, visible face, good finish.

Technical Notes

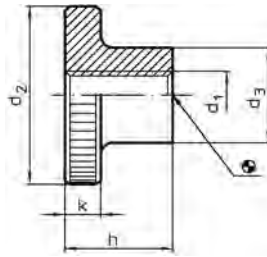
Size M12 not contained in DIN standard.

POSITIONING ELEMENTS

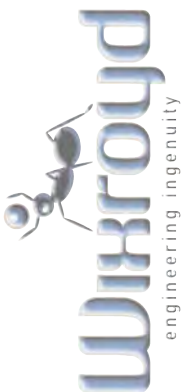


Knurled Nuts with collar

NEW CAD DIN DIN 466



Order No.	d ₁	d ₂	d ₃	h	k	g
37100.W0003	M 3	12	6	7,5	2,5	3
37100.W0004	M 4	16	8	9,5	3,5	7
37100.W0005	M 5	20	10	11,5	4,0	13
37100.W0006	M 6	24	12	15,0	5,0	24
37100.W0008	M 8	30	16	18,0	6,0	46
37100.W0010	M10	36	20	23,0	8,0	83
37100.W0012	M12	40	22	25,0	10,0	118

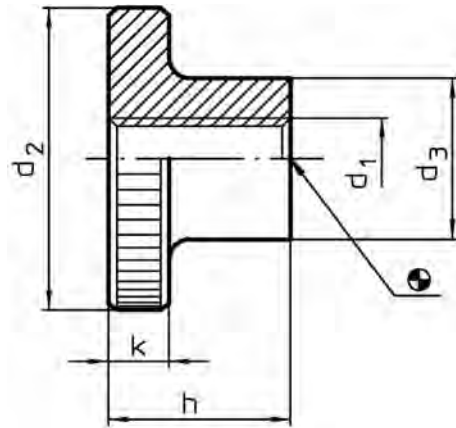


Knurled Nuts

with collar, **stainless steel**



DIN 466



3711



Material

Stainless steel 1.4305 (AISI 303),
matt, shot-blasted.



POSITIONING ELEMENTS

Order No.	d_1	d_2	d_3	h	k	g
3711.W004	M 4	16	8	9,5	3,5	7
3711.W005	M 5	20	10	11,5	4,0	13
3711.W006	M 6	24	12	15,0	5,0	24
3711.W008	M 8	30	16	18,0	6,0	46
3711.W010	M10	36	20	23,0	8,0	56

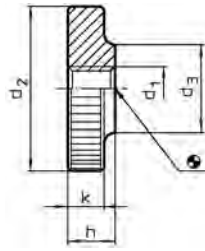


Flat Knurled Nuts





 DIN 467



37120

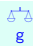


Material
Steel, quality 5.8, blackened. Turned, visible face, good finish.

Technical Notes
Size M12 not contained in DIN standard.



POSITIONING ELEMENTS

Order No.	d ₁	d ₂	d ₃	h	k	
37120.W0003	M 3	12	6	3	2,5	2
37120.W0004	M 4	16	8	4	3,5	5
37120.W0005	M 5	20	10	5	4,0	10
37120.W0006	M 6	24	12	6	5,0	17
37120.W0008	M 8	30	16	8	6,0	33
37120.W0010	M10	36	20	10	8,0	63
37120.W0012	M12	40	22	12	10,0	93



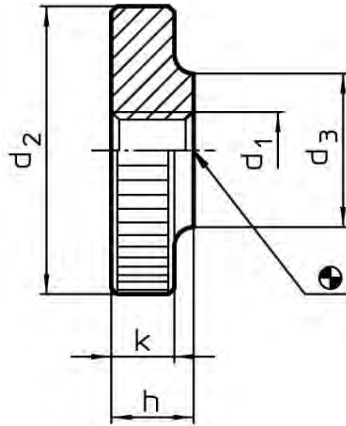


Flat Knurled Nuts

stainless steel



DIN 467




Material

Stainless steel 1,4305 (AISI 303).



POSITIONING ELEMENTS

Order No.	d ₁	d ₂	d ₃	h	k	 g
3713.W003	M 3	12	6	3	2,5	4
3713.W004	M 4	16	8	4	3,5	5
3713.W005	M 5	20	10	5	4,0	10
3713.W006	M 6	24	12	6	5,0	17
3713.W008	M 8	30	16	8	6,0	33
3713.W010	M10	36	20	10	8,0	40



3714



POSITIONING ELEMENTS

Material
Steel, quality 5.8, blackened. Turned, visible face, good finish.

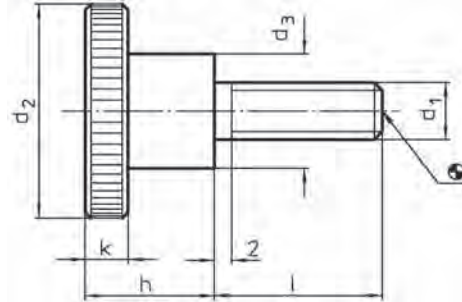
Technical Notes
All knurled screws are one-piece manufactured. Contrary to the Official Standard Sheet, they all have a thread up to the head, as shown, but no recess at the thread end.



Knurled Thumb Screws



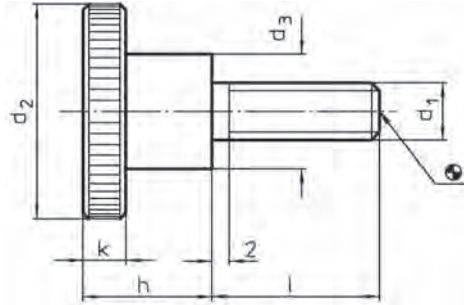
DIN 464



Order No.	d ₁	l	d ₂	d ₃	h	k	$\Delta \frac{g}{g}$
3714.W031	M 3	6	12	6	7,5	2,5	3,5
3714.W032	M 3	10	12	6	7,5	2,5	3,7
3714.W033	M 3	12	12	6	7,5	2,5	3,8
3714.W034	M 3	16	12	6	7,5	2,5	4,2
3714.W040	M 4	5	16	8	9,5	3,5	8,2
3714.W041	M 4	8	16	8	9,5	3,5	8,6
3714.W042	M 4	10	16	8	9,5	3,5	8,6
3714.W043	M 4	12	16	8	9,5	3,5	8,8
3714.W044	M 4	16	16	8	9,5	3,5	9,1
3714.W045	M 4	20	16	8	9,5	3,5	9,6
3714.W046	M 4	25	16	8	9,5	3,5	10,0
3714.W051	M 5	6	20	10	11,5	4,0	15,2
3714.W052	M 5	8	20	10	11,5	4,0	15,4
3714.W053	M 5	10	20	10	11,5	4,0	15,7
3714.W054	M 5	12	20	10	11,5	4,0	16,0
3714.W055	M 5	16	20	10	11,5	4,0	16,7
3714.W056	M 5	20	20	10	11,5	4,0	17,0
3714.W057	M 5	25	20	10	11,5	4,0	18,0
3714.W058	M 5	30	20	10	11,5	4,0	18,6
3714.W061	M 6	8	24	12	15,0	5,0	26,0
3714.W062	M 6	10	24	12	15,0	5,0	27,0
3714.W063	M 6	12	24	12	15,0	5,0	28,0
3714.W064	M 6	16	24	12	15,0	5,0	29,0
3714.W065	M 6	20	24	12	15,0	5,0	30,0
3714.W066	M 6	25	24	12	15,0	5,0	31,0
3714.W067	M 6	30	24	12	15,0	5,0	32,0
3714.W068	M 6	35	24	12	15,0	5,0	33,0
3714.W081	M 8	12	30	16	18,0	6,0	55,0
3714.W082	M 8	16	30	16	18,0	6,0	56,0
3714.W083	M 8	20	30	16	18,0	6,0	60,0
3714.W084	M 8	25	30	16	18,0	6,0	61,0
3714.W085	M 8	30	30	16	18,0	6,0	62,0
3714.W086	M 8	35	30	16	18,0	6,0	63,0
3714.W087	M 8	40	30	16	18,0	6,0	64,0
3714.W101	M10	20	36	20	23,0	8,0	108,0
3714.W102	M10	25	36	20	23,0	8,0	112,0
3714.W103	M10	30	36	20	23,0	8,0	113,0
3714.W104	M10	35	36	20	23,0	8,0	117,0
3714.W105	M10	40	36	20	23,0	8,0	119,0

Knurled Thumb Screws

stainless steel



Order No.	d ₁	l	d ₂	d ₃	h	k	g
3715.W041	M 4	8	16	8	9,5	3,5	8,5
3715.W042	M 4	10	16	8	9,5	3,5	8,6
3715.W043	M 4	12	16	8	9,5	3,5	8,8
3715.W044	M 4	16	16	8	9,5	3,5	9,1
3715.W051	M 5	10	20	10	11,5	4,0	15,7
3715.W052	M 5	12	20	10	11,5	4,0	16,0
3715.W053	M 5	16	20	10	11,5	4,0	16,7
3715.W054	M 5	20	20	10	11,5	4,0	17,3
3715.W055	M 5	25	20	10	11,5	4,0	18,0
3715.W061	M 6	12	24	12	15,0	5,0	28,0
3715.W062	M 6	16	24	12	15,0	5,0	29,0
3715.W063	M 6	20	24	12	15,0	5,0	30,0
3715.W064	M 6	25	24	12	15,0	5,0	31,0
3715.W065	M 6	30	24	12	15,0	5,0	32,0
3715.W081	M 8	16	30	16	18,0	6,0	56,0
3715.W082	M 8	20	30	16	18,0	6,0	60,0
3715.W083	M 8	25	30	16	18,0	6,0	61,0
3715.W084	M 8	30	30	16	18,0	6,0	62,0



3715



Material

Stainless steel 1.4305 (AISI 303), matt, shot-blasted.

Technical Notes

All knurled screws are one-piece manufactured. Contrary to the Official Standard Sheet, they all have a thread up to the head, as shown, but no recess at the thread end.



POSITIONING ELEMENTS

NEED SOMETHING SPECIAL?



Contact us for quick quotes for special items



Wixroyd

3716



Material

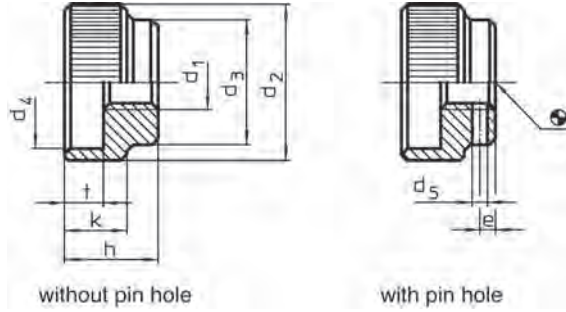
Free-cutting steel, blackened.



POSITIONING ELEMENTS

Knurled Nuts

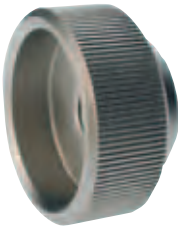
DIN 6303



Order No.	Type	d ₁	d ₂	d ₃	d ₄	d ₅ H11	e	h	k	t	Pin required DIN 7	$\frac{\Delta}{g}$
3716.W005	Without pin hole	M 5	20	14	15	-	-	12	8	5	-	16
3716.W006	Without pin hole	M 6	24	16	18	-	-	14	10	6	-	27
3716.W008	Without pin hole	M 8	30	20	24	-	-	17	12	7	-	50
3716.W010	Without pin hole	M10	36	28	30	-	-	20	14	8	-	83
3716.W012	Without pin hole	M12	40	32	34	-	-	24	16	10	-	123
3716.W105	With pin hole	M 5	20	14	15	1,4	2,5	12	8	5	1,5 m 6 x 14	16
3716.W106	With pin hole	M 6	24	16	18	1,4	2,5	14	10	6	1,5 m 6 x 16	27
3716.W108	With pin hole	M 8	30	20	24	1,9	3,0	17	12	7	2,0 m 6 x 20	50
3716.W110	With pin hole	M10	36	28	30	2,9	4,0	20	14	8	3,0 m 6 x 28	83
3716.W112	With pin hole	M12	40	32	34	3,9	4,0	24	16	10	4,0 m 6 x 32	123

Wixroyd

3717



Material

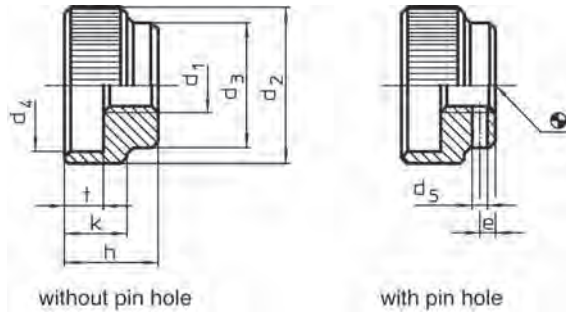
Stainless steel 1.4305 (AISI 303), matt, shot-blasted.



Knurled Nuts

stainless steel

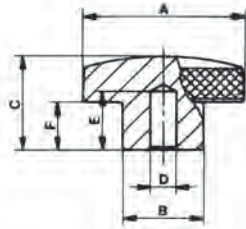
DIN 6303



Order No.	Type	d ₁	d ₂	d ₃	d ₄	d ₅ H11	e	h	k	t	Pin required DIN 7	$\frac{\Delta}{g}$
3717.W005	Without pin hole	M 5	20	14	15	-	-	12	8	5	-	16
3717.W006	Without pin hole	M 6	24	16	18	-	-	14	10	6	-	27
3717.W008	Without pin hole	M 8	30	20	24	-	-	17	12	7	-	50
3717.W010	Without pin hole	M10	36	28	30	-	-	20	14	8	-	83
3717.W012	Without pin hole	M12	40	32	34	-	-	24	16	10	-	123
3717.W105	With pin hole	M 5	20	14	15	1,4	2,5	12	8	5	1,5 m 6 x 14	16
3717.W106	With pin hole	M 6	24	16	18	1,4	2,5	14	10	6	1,5 m 6 x 16	27
3717.W108	With pin hole	M 8	30	20	24	1,9	3,0	17	12	7	2,0 m 6 x 20	50
3717.W110	With pin hole	M10	36	28	30	2,9	4,0	20	14	8	3,0 m 6 x 28	83
3717.W112	With pin hole	M12	40	32	34	3,9	4,0	24	16	10	4,0 m 6 x 32	123

Knurled Knob

Aluminium



Order No.	A	B	C	F	D	E	$\frac{\Delta}{g}$
3718.W040	40	22	30	18	8	22	60
3718.W050	50	25	30	15	10	22	100
3718.W060	60	25	30	17	12	22	130
3718.W070	70	30	45	29	12	32	200
3718.W080	80	30	45	29	16	32	260



3718



Material
Aluminium.

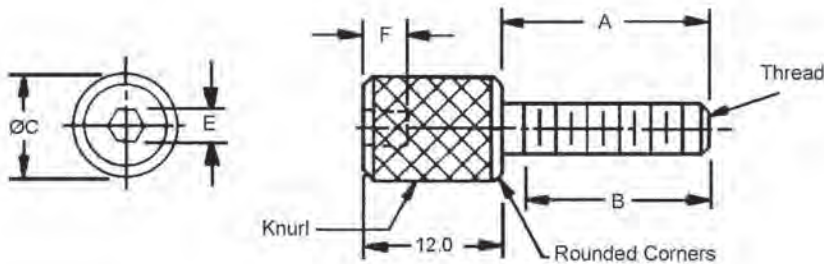
Technical Notes
Measurements approximate.



POSITIONING ELEMENTS

Knurled Thumb Screws

stainless steel



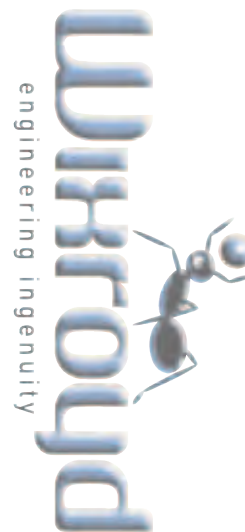
Order No.	Thread	A	ØC	B	E	F (min.)
3720.W001	M3x0,5	12	6	11	2	2
3720.W002	M3x0,5	19	6	16	2	2
3720.W003	M3x0,5	12	8	11	2	2
3720.W004	M3x0,5	19	8	16	2	2
3720.W005	M3x0,5	10	10	8	3	3
3720.W006	M3x0,5	12	10	11	3	3
3720.W015	M4x0,7	12	6	11	2	2
3720.W016	M4x0,7	19	6	16	2	2
3720.W017	M4x0,7	25	6	20	2	2
3720.W018	M4x0,7	12	8	11	2	2
3720.W019	M4x0,7	19	8	16	2	2
3720.W020	M4x0,7	25	8	20	2	2
3720.W021	M4x0,7	10	10	8	3	3
3720.W022	M4x0,7	10	10	12	3	3
3720.W023	M5x0,8	12	8	11	2	2
3720.W024	M5x0,8	19	8	16	2	2
3720.W025	M5x0,8	25	8	20	2	2
3720.W026	M5x0,8	32	8	25	2	2
3720.W027	M5x0,8	12	10	11	3	3
3720.W028	M5x0,8	19	10	16	3	3
3720.W029	M5x0,8	25	10	20	3	3
3720.W030	M5x0,8	32	10	25	3	3



3720



Material
Stainless steel DIN 1,4305 (AISI 303).



Wixroyd

3733



Material

Body: Thermoplastic (PA), black.
Insert: steel, galvanised or stainless steel 1.4305 (AISI 303).

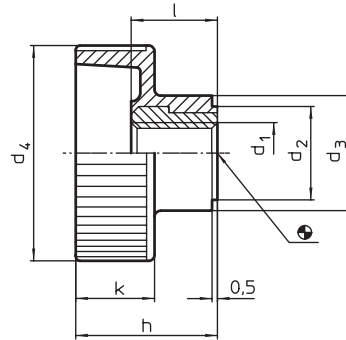
Technical Notes

Temperature resistant from -30°C to +80°C.



POSITIONING ELEMENTS

Plastic Knurled Nuts



Order No.	Type	d ₁	d ₂	d ₃	d ₄	h	k	l	g
3733.W004	Steel Insert M 4	9	12	19	14,0	8,0	9,0	4	
3733.W005	Steel Insert M 5	9	12	19	14,0	8,0	9,0	5	
3733.W006	Steel Insert M 6	11	14	24	16,5	9,5	10,5	7	
3733.W008	Steel Insert M 8	13	16	30	19,5	11,0	11,5	10	
3733.W010	Steel Insert M10	15	18	36	22,5	12,5	14,0	16	
3733.W505	Stainless Insert M 5	9	12	19	14,0	8,0	9,0	5	
3733.W506	Stainless Insert M 6	11	14	24	16,5	9,5	10,5	7	
3733.W508	Stainless Insert M 8	13	16	30	19,5	11,0	11,5	10	

Wixroyd

3735



Material

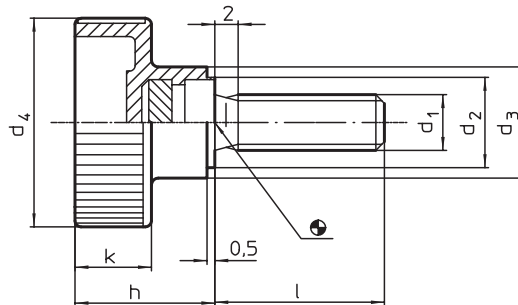
Body: Thermoplastic (PA), black.
Screw: steel, galvanised or stainless Steel 1.4305 (AISI 303).

Technical Notes

Temperature resistant from -30°C to +80°C.

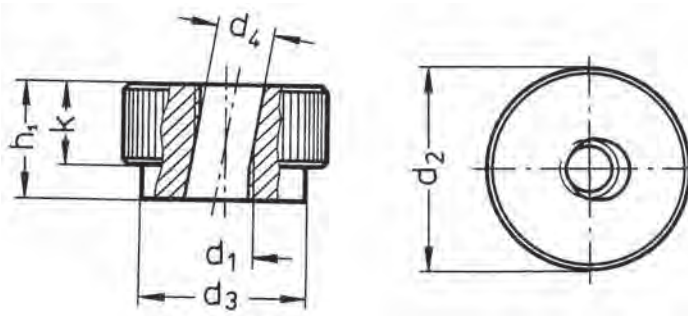


Knurled Thumb Screw
with stainless steel thread



Order No.	Type	d ₁	l	d ₂	d ₃	d ₄	h	k	g
3735.W041	M 4 Steel Screw	15	9	12	19	14,0	8,0	6	
3735.W042	M 4 Steel Screw	20	9	12	19	14,0	8,0	7	
3735.W051	M 5 Steel Screw	10	9	12	19	14,0	8,0	6	
3735.W052	M 5 Steel Screw	20	9	12	19	14,0	8,0	7	
3735.W053	M 5 Steel Screw	25	9	12	19	14,0	8,0	8	
3735.W061	M 6 Steel Screw	16	11	14	24	16,5	9,5	11	
3735.W062	M 6 Steel Screw	20	11	14	24	16,5	9,5	12	
3735.W063	M 6 Steel Screw	30	11	14	24	16,5	9,5	13	
3735.W081	M 8 Steel Screw	20	13	16	30	19,5	11,0	19	
3735.W082	M 8 Steel Screw	25	13	16	30	19,5	11,0	20	
3735.W083	M 8 Steel Screw	30	13	16	30	19,5	11,0	23	
3735.W101	M10 Steel Screw	25	15	18	36	22,5	12,5	33	
3735.W102	M10 Steel Screw	30	15	18	36	22,5	12,5	35	
3735.W103	M10 Steel Screw	40	15	18	36	22,5	12,5	40	
3735.W551	M 5 Stainless Screw	10	9	12	19	14,0	8,0	10	
3735.W553	M 5 Stainless Screw	25	9	12	19	14,0	8,0	7	
3735.W561	M 6 Stainless Screw	16	11	14	24	16,5	9,5	11	
3735.W562	M 6 Stainless Screw	20	11	14	24	16,5	9,5	12	
3735.W563	M 6 Stainless Screw	30	11	14	24	16,5	9,5	13	
3735.W582	M 8 Stainless Screw	25	13	16	30	19,5	11,0	20	
3735.W583	M 8 Stainless Screw	30	13	16	30	19,5	11,0	23	

Quick Tightening Knurled Knob



Order No.	d ₁	d ₂	d ₃	d ₄	h ₁	k	$\frac{\Delta}{g}$
3736.W006	M 6	24	16	6,2	14	10	28
3736.W008	M 8	30	20	8,2	17	12	47
3736.W010	M10	36	28	10,3	20	14	86

Wixroyd

3736



Material
Turned and burnished steel.

Technical Notes
These knurled knobs are used when quick tightening is required and with only a slight clamping force. The knob is inserted obliquely on the threaded stud and then placed in the axial position so that it fits onto the stud threads. At this point it can be locked with just a slight rotation.

Tips
For other quick tightening nut see part no. 2450 page 206.



POSITIONING ELEMENTS

Wixroyd Zero Point System

The Productivity Solution

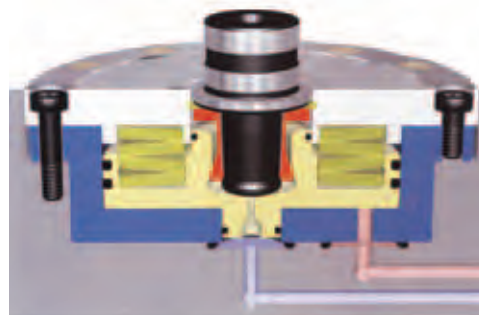
Wixroyd



Request your Free Zero Point Catalogue - Call 01483 286677

Zero Point System

NEW!



1,5 ton collet lock version

Q. For reductions in machine downtime.

Q. Greater productivity and profitability.

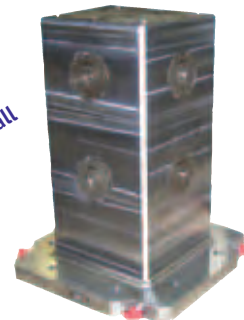
Q. Wixroyd Zero Point System can be integrated into angles & cubes.



Q. Pull Stud

Q. Clamping Unit
- 1 ton
- 2 ton
- 3 ton

We also manufacture to your drawings - call for a quote!



Wixroyd

3738



POSITIONING ELEMENTS

Material

Stainless steel 1.4404 (AISI 316), body sintered, matt, shot-blasted. Screw: stainless steel, 1.4301 (AISI 304), matt, shot-blasted.

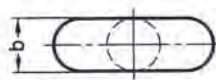
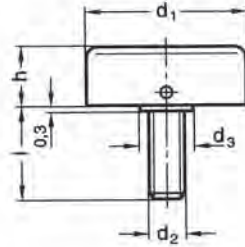
Technical Notes

These quarter turn screws are used to develop higher clamping torques than is possible with knurled handles.



Quarter Turn Screw, Male

stainless steel



Order No.	d ₁	d ₂	d ₃	l	b	h	g
3738.W061	25	M 6	8	16	8	10,0	15
3738.W062	25	M 6	8	20	8	10,0	16
3738.W063	25	M 6	8	25	8	10,0	17
3738.W081	30	M 8	10	16	10	12,0	26
3738.W082	30	M 8	10	20	10	12,0	28
3738.W083	30	M 8	10	25	10	12,0	30
3738.W084	30	M 8	10	32	10	12,0	32
3738.W085	36	M 8	12	16	12	14,5	38
3738.W086	36	M 8	12	20	12	14,5	42
3738.W087	36	M 8	12	25	12	14,5	45
3738.W088	36	M 8	12	32	12	14,5	48
3738.W101	36	M10	12	20	12	14,5	43
3738.W102	36	M10	12	30	12	14,5	47
3738.W103	36	M10	12	40	12	14,5	52

Wixroyd

3740



Material

Stainless steel 1.4404 (AISI 316), sintered, matt, shot-blasted.

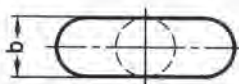
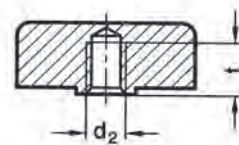
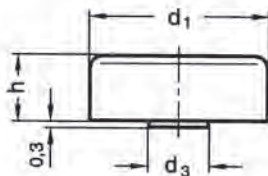
Technical Notes

These quarter turn screws are used to develop higher clamping torques than is possible with knurled handles.



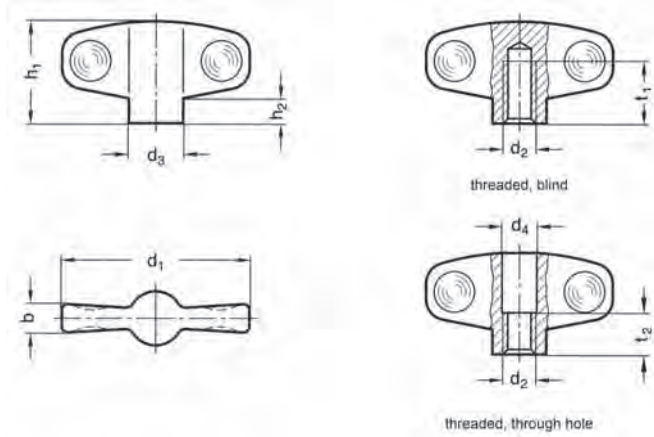
Quarter Turn Screw, Female

stainless steel



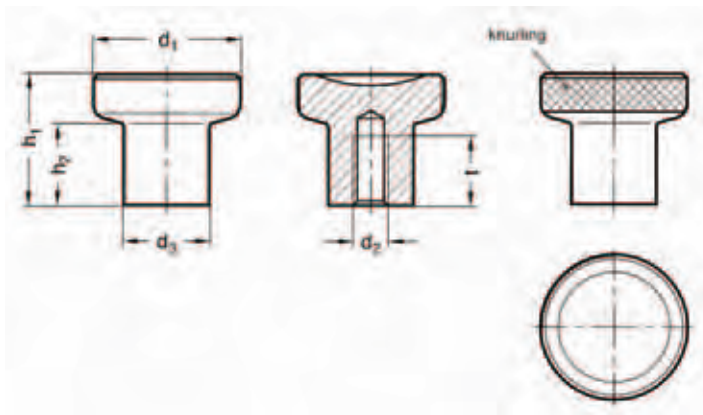
Order No.	d ₁	d ₂	d ₃	b	h	t min.	g
3740.W061	25	M 6	8	8	10,0	7	7
3740.W062	30	M 6	10	10	12,0	9	9
3740.W081	30	M 8	10	10	12,0	9	9
3740.W082	36	M 8	12	12	14,5	10	12

Wing Nut stainless steel



Order No.	Type	d ₁	d ₂	d ₃	d ₄ H13	b	h ₁	h ₂ ≈	t ₁ min.	t ₂
3742.W065	Threaded, blind	45	M 6	13	6,5	7	24	5,5	12	10
3742.W085	Threaded, blind	45	M 8	13	8,5	7	24	5,5	15	13
3742.W087	Threaded, blind	57	M 8	16	8,5	8	28	6,5	15	13
3742.W107	Threaded, blind	57	M10	16	10,5	8	28	6,5	18	16
3742.W565	Threaded, through hole	45	M 6	13	6,5	7	24	5,5	12	10
3742.W585	Threaded, through hole	45	M 8	13	8,5	7	24	5,5	15	13
3742.W587	Threaded, through hole	57	M 8	16	8,5	8	28	6,5	15	13
3742.W607	Threaded, through hole	57	M10	16	10,5	8	28	6,5	18	16

Thumb Knob stainless steel



Order No. Knurled Edge	Order No. Smooth Edge	d ₁	d ₂	d ₃	h ₁	h ₂	t min.
3746.W042	3746.W542	21	M 4	12,5	18	10,5	10
3746.W052	3746.W552	21	M 5	12,5	18	10,5	10
3746.W064	3746.W564	25	M 6	14,5	22,5	14	12
3746.W084	3746.W584	25	M 8	14,5	22,5	14	12
3746.W088	3746.W508	31	M 8	18,5	27	17	15
3746.W108	3746.W508	31	M 10	18,5	27	17	17

Wixroyd

3742



Material
Stainless steel 1.4581 (AISI 316), matt finish.



POSITIONING ELEMENTS

Wixroyd

3746



Material
Stainless steel 1.4305 (AISI 303), Matt finish.



lenuity **ouya**